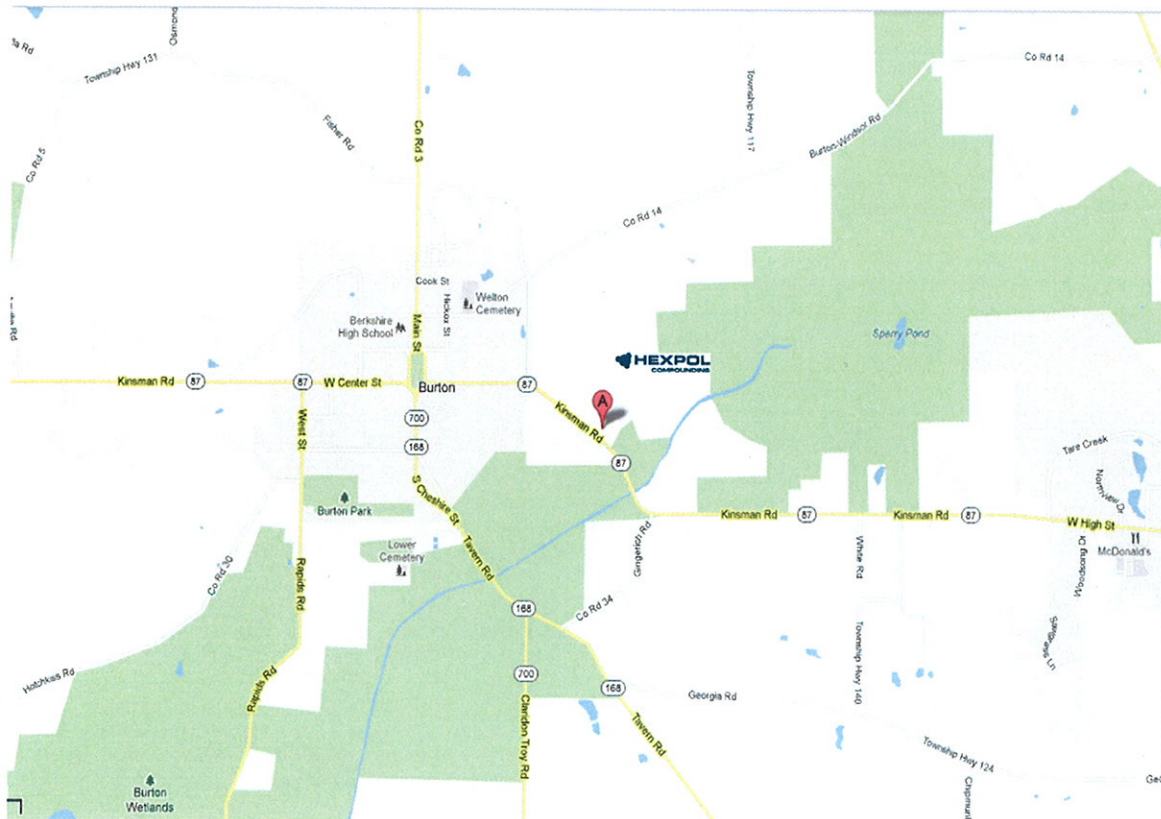


How to get to Hexpol Compounding, Burton Rubber Processing, Burton, OH, USA



Directions from Cleveland Hopkins International Airport 5300 Riverside Dr Cleveland, OH 44135

1. Head south on Upper Dr toward Park Rd
0.2 mi
2. Slight left toward OH-237 N
0.1 mi
3. Turn left onto the ramp to OH-237 N
121 ft
4. Keep left at the fork, follow signs for Interstate 71/ Interstate 480/Ohio 237 N/ Cleveland and merge onto OH-237 N
0.7 mi
5. Take the Interstate 480 E exit toward Youngstown
0.6 mi
6. Merge onto I-480 E
15.6 mi
7. Keep left to continue on Interstate 480N E, follow signs for Interstate 271 N/ U.S. 422 N/Erie Pa/Warren
2.0 mi
8. Continue onto US-422 E
18.1 mi
9. Turn left onto Co Rd 1/ Rapids Rd
Continue to follow Rapids Rd
6.0 mi
10. Turn right onto W Center St
0.5 mi
11. Continue onto W Park Ave
397 ft
12. Turn right onto OH-87 E/E Center St
Continue to follow OH-87 E
Destination will be on the left
0.8 mi

B 14330 Kinsman Rd,
Burton, OH 44021